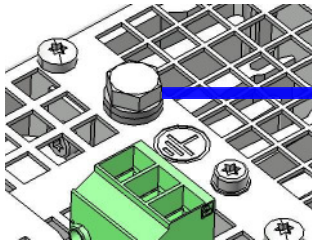


PE connection



ELECTRICAL SHEET for POWER SUPPLY - 2 CHANNELS

ARRANGEMENT AND CONNECTORS

[TR421401.0.0.0]

X5	IN/OUT
1	IN0 (Reset Fault)
2	OUT0 (HVdc READY)
3	OUT1 (VacLine state)
4	OUT2 (Fault)
5	RTO contact
6	

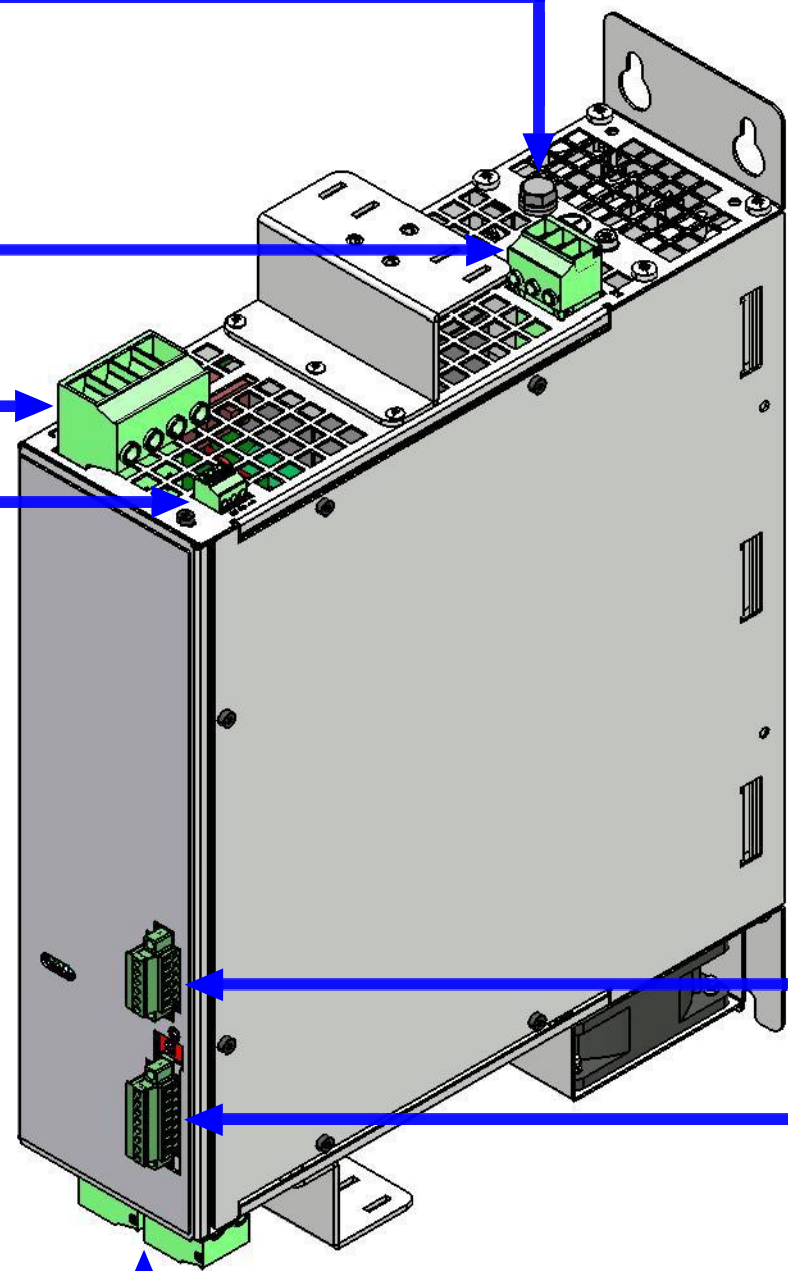
X1	BRAKE RESISTOR
1	
2	
3	

X2	POWER LINE
1	L1
2	L2
3	L3
4	PE

X3	LOGIC
1	+24V
2	+24V
3	GND

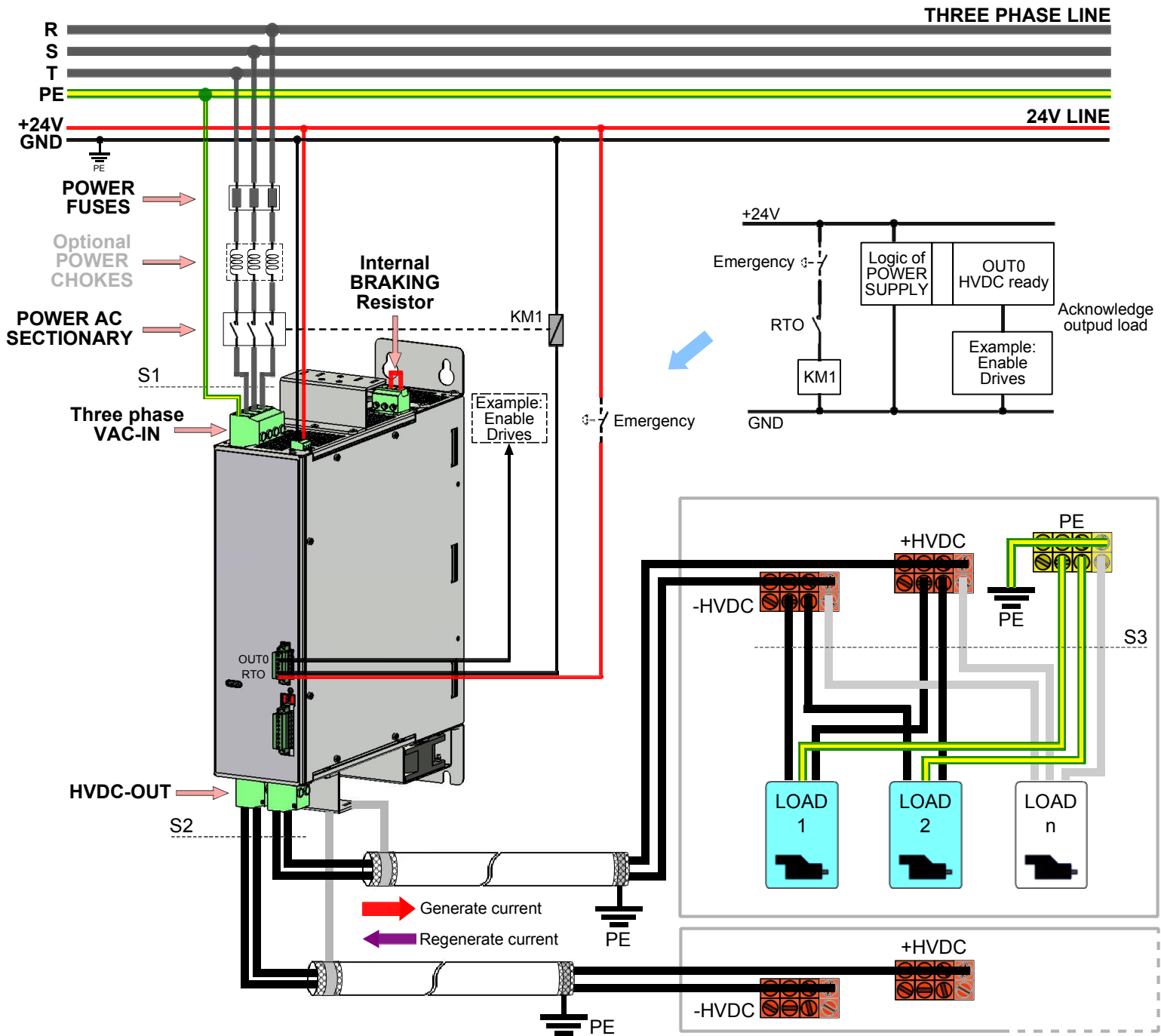
X6	COM
1	-
2	-
3	RS232
4	
5	GND_COM
6	TX232
7	RX232
8	SHIELD

X7	POWER OUTPUT	X8	POWER OUTPUT
1	+HVDC	1	+HVDC
2	-HVDC	2	-HVDC



SEE MANUAL FOR DETAILS

EXAMBLE OF CONNECTION



S1, S2, S3 wires section. SEE MANUAL FOR DETAILS

INCORRECT CONNECTION

